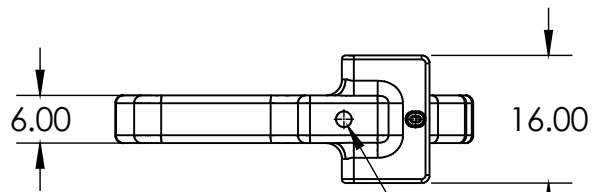
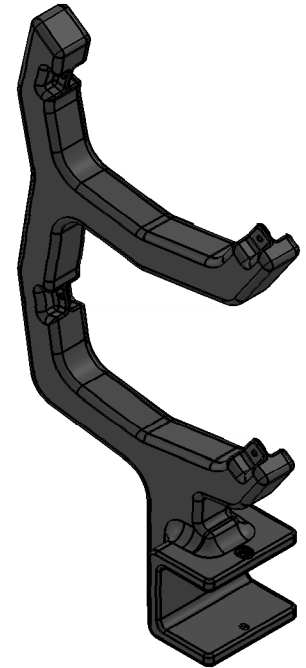
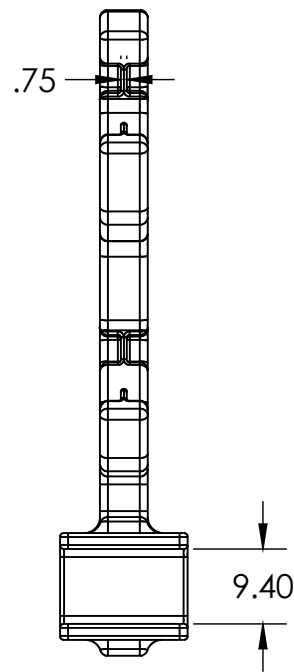
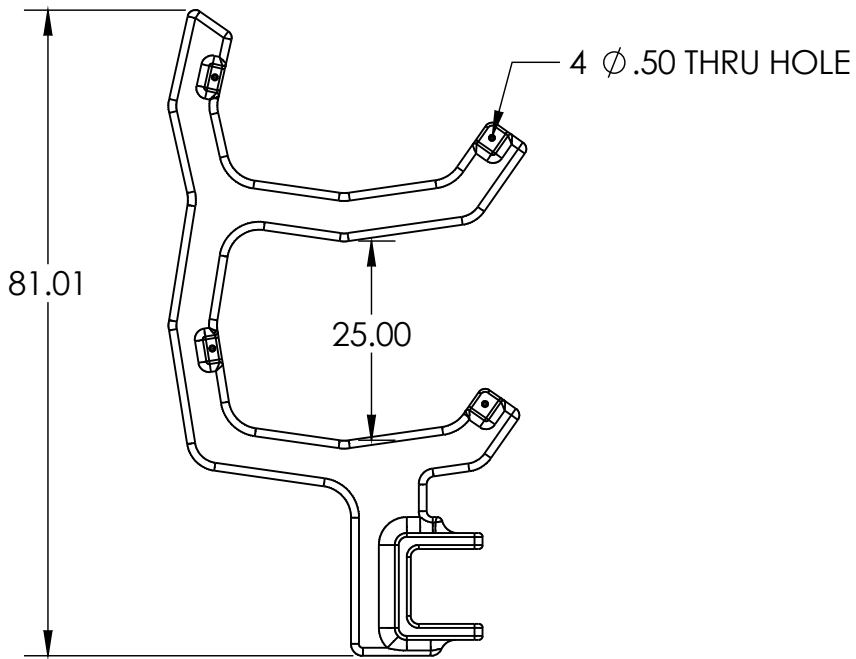


Kayak Rack



Ø 1.94 X 3/16" RECESS VENT LOCATION

WALL THICKNESS: 0.200"

PN: 102008

REV	DESCRIPTION	DATE	NAME	DRAWN	JC	11/28/16	TITLE:		
A	RELEASED	11/28/16	JC	Q.A.			JET PORT KAYAK RACK		
B	THICKNESS AT BOTTOM CHANGED TO 7.5", VENT LOCATION ADDED	1/23/17	JC	UNLESS OTHERWISE SPECIFIED:					
C	GAP FOR ATTACHMENT CHANGED FROM 9.06" TO 9.40"	2/7/17	JC	DIMENSIONS ARE IN INCHES TOLERANCES: ANGULAR: MACH ± 1 BEND ± 1 TWO PLACE DECIMAL ± 0.03 THREE PLACE DECIMAL ± 0.01					
D	MOUNTING HOLE CHANGED TO A SLOT	5/22/20	JC	MATERIAL MDPE					
				FINISH			SIZE	DWG. NO.	REV
				<small>PROPRIETARY AND CONFIDENTIAL THE INFORMATION CONTAINED IN THIS DRAWING IS THE SOLE PROPERTY OF RHINO ROTATIONAL MOLDING. ANY REPRODUCTION IN PART OR AS A WHOLE WITHOUT THE WRITTEN PERMISSION OF RHINO ROTATIONAL MOLDING IS PROHIBITED.</small>			A	0868	D
							SCALE: 1:24	SHOT WEIGHT: 30#	SHEET 1 OF 1